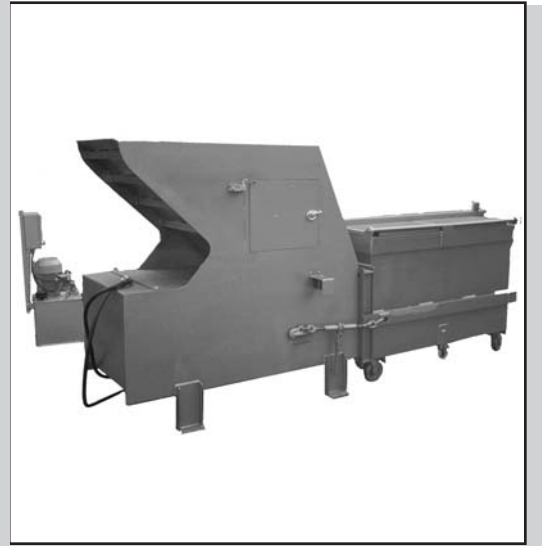


MIDPAK - 6

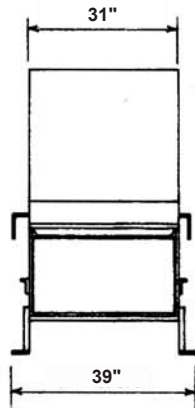


COMPACT COMPUTERIZED COMPACTION

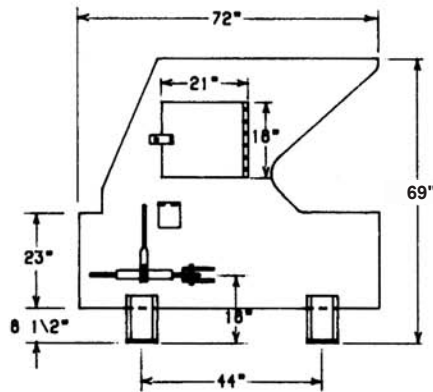
- Designated and engineered to suit hi-rise buildings
- Reinforced Steel plate construction on standard models with abrasive resistant plate in wear areas.
- Integral main frame/hopper construction with reinforced impact plate.
- Large doors on both sides of hopper for easy access.
- Suites most existing containers. Sizes range from 1 cu. yd. to 8 cu. yd.
- Fully automatic photo-eye operation with time delay. Starts and stops unattended.
- Automatic compactor shut down if motor runs continuously for more than 15 minutes.
- Programmable microprocessor controls for state-of-the-art operation and reduced maintenance.
- Standard features include:
 - Door safety interlock
 - 80% and 100% full container lights
 - Emergency stop button
 - Transformer
 - Key Start

MIDLAND TECHNOLOGY INC.

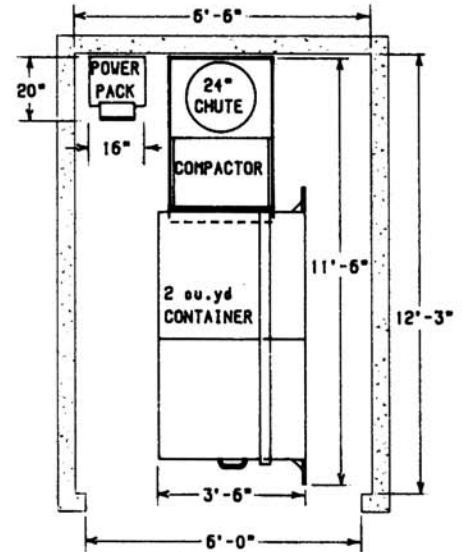
M I D P A K 6



FRONT VIEW



SIDE VIEW



TYPICAL LAYOUT

SPECIFICATIONS

Compactor Model	MIDPAK6
Chamber Capacity	0.30 cu. yds
Cycle Time	28 seconds
Displacement per hour	33 cu. yds
Ram Face Pressure (N)	38 psi
Ram Face Pressure (M)	51 psi
Packing Force (N)	20,160 lbs.
Packing Force (M)	27,720 lbs.
Ram Penetration	5 inches
Chamber Opening	23"L x 30.5"W
Ram Height	18 inches
Ram Width	30.5 inches
Overall Dimensions	72"L x 39"W x 69"H
Length w/container	138"

STRUCTURAL

Floor	3/8" HR Plate
Ram Face	3/8" Plate
Main Frame & Hopper	3/16" Plate
Ram Top and Base	1/4" Plate

HYDRAULIC

Power Unit	Remote
Cylinders	4" Bore, 2" Rod
Pump	5 GPM
Oil Tank	14 Gals

ELECTRICAL

Motor	5HP, 1800 RPM
Motor Power	208/220/440 V, 3PH, 60Hz
Circuits	115 VAC, 24 VDC

STANDARD FEATURES

Photo-Electric Eye w/Timer,
Door Safety Interlock, Key Start, Transformer

MIDLAND TECHNOLOGY INC
9545 W. Ainslie Street Schiller Park, IL 60176
847-678-4007 Phone 847-671-3083 Fax