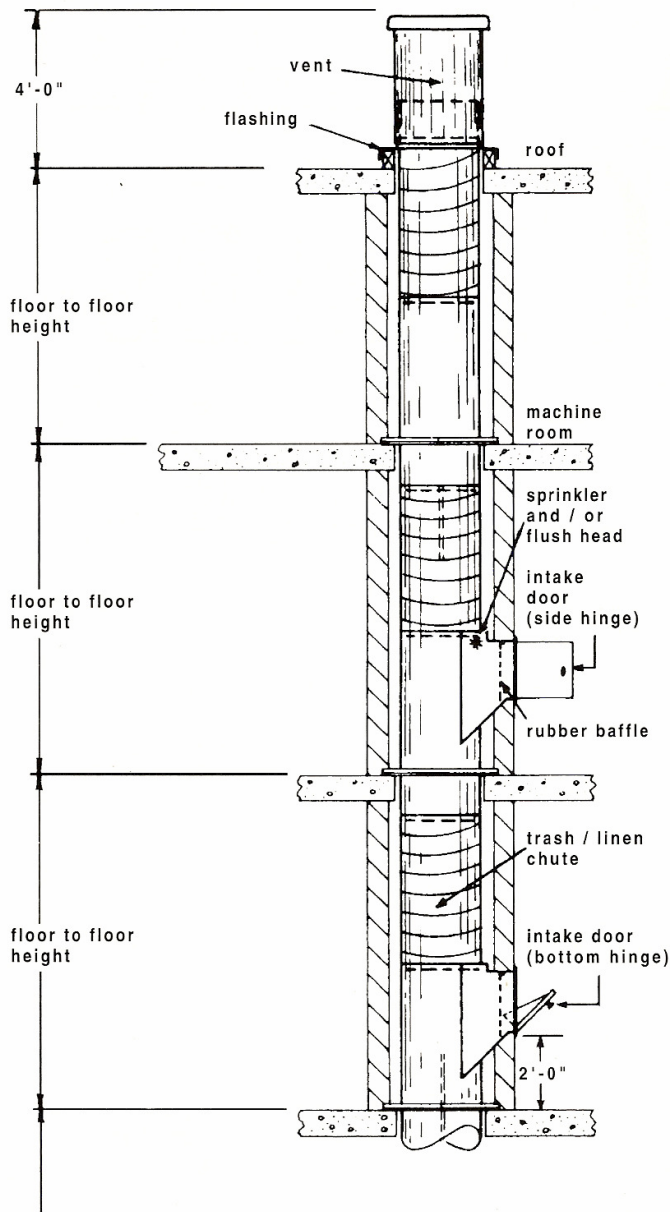


MIDLAND CHUTES

The Nation's preferred Manufacturer
of Linen and Rubbish Chutes

MIDLAND LETS YOU CUSTOMIZE YOUR SYSTEM TO BEST SUIT YOUR REQUIREMENTS.



THE MIDLAND CHUTE: QUIET, SAFE, SECURE.

Midland manufactures the quietest chute system available. Unique spiraled expansion sections provide sound dampening to produce a chute that's up to three times quieter than competitive makes (test results available upon request). Optional sound coating and isolator pads produce an even quieter chute.

The architects at Midland use CAD design systems to assure you designs that are accurate and on-time. Our chutes meet all NFPA-82 Standards, and all intake doors are UL-B labeled and approved for both dry-wall and masonry construction.

Our knowledgeable representatives are located throughout the country. Call for the name of the representative nearest you.

OUR BASIC CHUTE CONTAINS:

Intake section(s) with specified door installed on unit.

Spiraled expansion section(s) to make up balance of floor height.

Angle iron floor brace(s) to support the chute.

Outlet door equipped with fusible link to close in case of fire.

Full diameter vent to extend four feet above roof level.

Sprinkler and flushing head at the top of chute with additional sprinkler heads at every other floor.

Additional items may be ordered such as Sanitizing Unit, Access Doors, Electric Interlocks, Sound Coating and Isolator Pads.

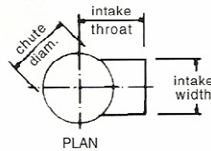
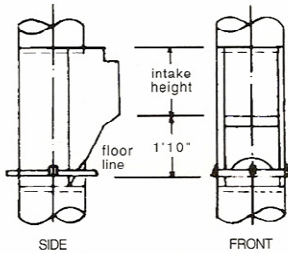
CHUTE COMPONENTS AVAILABLE SEPARATELY OR IN SYSTEMS.

RUBBISH/LINEN CHUTE.

We furnish 16 gauge aluminized or 400 series stainless steel chutes rolled to the specified diameter you select. (NFPA-82 standard is 24") See chart below for sizes.

Our unit comes to you factory-assembled with doors bolted in place. All seams are mechanically locked or butt-welded.

The chute is shipped in sections. You simply slip-join them at the time of installation.



Floor Opening is chute dia. + 1/4"

RUBBISH INTAKE DOORS (MODEL B-H).

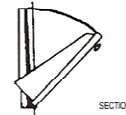
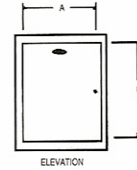
We provide bottom hinged intake doors where specified on drawings. Doors are UL-B rated and come equipped with silent, automatic door closures. The doors are stainless steel (No. 4 finish), include a border trim and have no exposed welds or solder seams. See chart for recommended sizes.

SIZES (Nominal)	
A	B
12"	15"
15"	18"
18"	18"
21"	18"
24"	24"

Frame dimensions equals $A + 1/2"$, $B + 1 3/4"$



HAND-OPERATED



LINEN INTAKE DOORS (MODEL L-S).

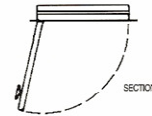
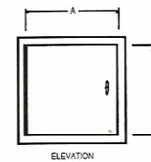
We provide side-hinged intake doors where specified on drawings. Doors are UL-B rated and come equipped with silent, automatic door closures. The doors are stainless steel (No. 4 finish) and include a border trim with no exposed welds or solder seams. See chart for recommended sizes.

SIZES (Nominal)	
A	B
12"	15"
15"	15"
18"	18"
21"	21"
24"	24"

Frame dimensions equals $A + 1 3/4"$, $B + 1/2"$



MANUAL OPERATED



Recommended Door Sizes

Chute Diameter	Rubbish Intake (A x B)	Linen Intake (A x B)	Linen Discharge (A x B)
15"	12" x 15"	12" x 12"	15" x 24"
18"	12" x 15"	15" x 15"	18" x 30"
20"	15" x 18"	18" x 18"	20" x 30"
24"	15" x 18"	21" x 21"	24" x 30"
30"	18" x 18"	24" x 24"	30" x 36"

Midland's UL-B label doors are approved for either drywall or masonry construction.

ELECTRIC INTERLOCKS, SOUND COATING, ISOLATOR PADS

Call for information about incorporating these into your design.

SANITIZING UNIT.

This unit may be ordered to attach to the flushing system to supply disinfectant to the chute. Unit has an on-off valve for regulation.

ROLLING DISCHARGE (TYPE D-HS).

One steel rolling discharge door is recommended with each rubbish system. Door is of "B" label construction (but does not bear a label) and is equipped with wheel rollers and fusible link. Door will roll shut when link is fused by excessive heat.

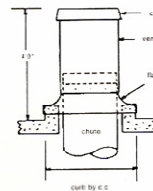


HOPPER DISCHARGE (TYPE D-TH).

One hopper discharge unit is recommended with each linen chute system. Hopper discharge consists of one stainless steel top-hinged UL-B label door assembled to the hopper.

Unit comes equipped with a fusible link.

Door will automatically slam shut when link is fused by excessive heat.



VENTS (TYPE G).

Vents meet NFPA-82 specification which requires the chute to extend full diameter through roof into a solid capped vent that is 4 feet above the roof. Flashings can be designed to fit roof curb, flat roof, or pitched roof.

CHUTES AND ACCESSORIES BY MIDLAND

Quiet

Midland manufactures the quietest chute system available. Unique spiraled expansion sections provide sound dampening to produce a chute that's up to three times quieter than competitive makes (test results available upon request). Optional sound coating and isolator pads produce an even quieter chute.

Safe

Midland Chutes meet all NFPA-82 Standards. All intake doors are UL-B labeled and approved for both drywall and masonry construction.

Quality

All Midland products are guaranteed against defective materials or workmanship for one year from date of acceptance. Midland has the right to inspect all claims.

Support

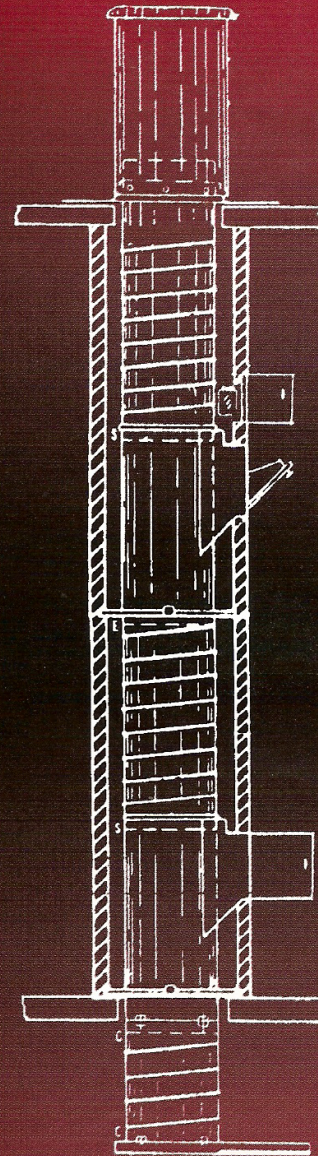
The architects at Midland use CAD Design Systems to assure that your designs are accurate and on-time. Our knowledgeable representatives are located throughout the country. Call for the name of the representative nearest you.

MIDLAND CHUTES

9555 West Ainslie
Schiller Park, IL 60176

Telephone (847)-678-4007
Fax (847)-671-3083
www.midlandchutes.com

A division of JD Acquisitions Corp.



Printed in the USA.