



GROCERY STORES and other Retailers USE BERNER to: **Protect Indoor Air Comfort**

High foot traffic on a cold or hot day?



GROCERY STORE + AIR CURTAIN

SAVE Energy

INCREASE CUSTOMER Retention & SATISFACTION

REDUCE Employee Turnover & COMPLAINTS

PROTECT Against Flies & Bees

KEEP FUMES OUT

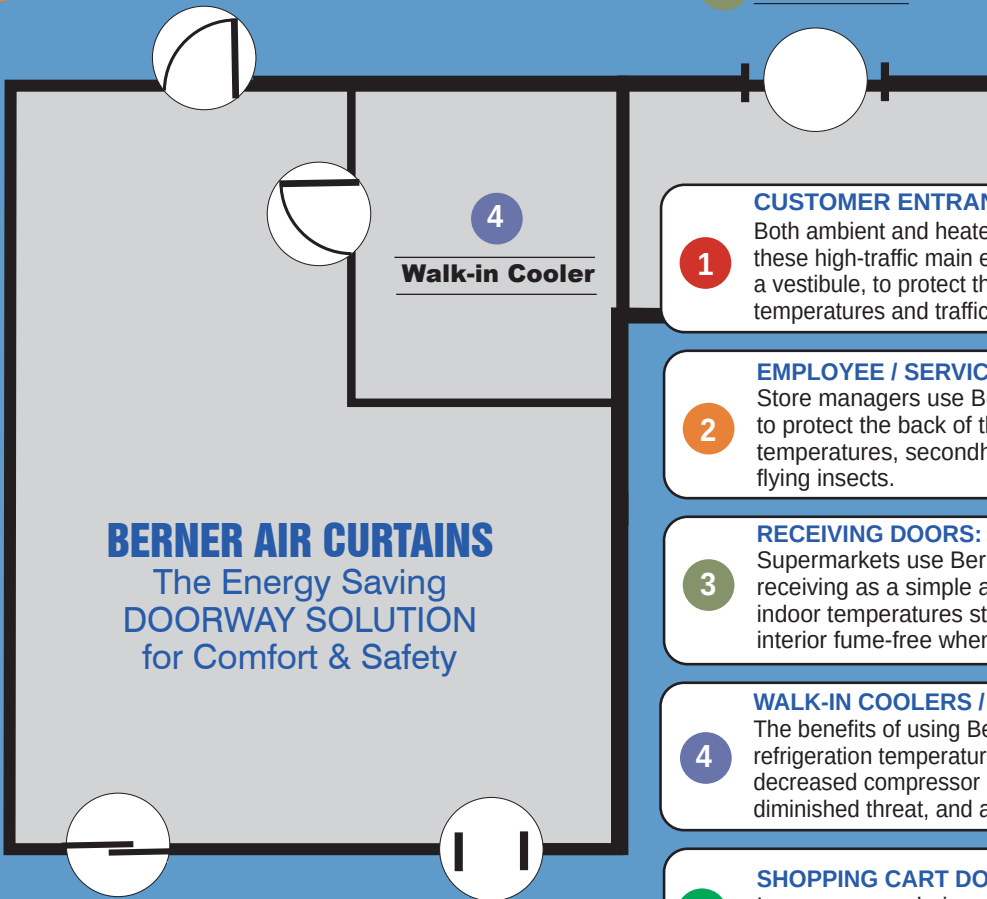
800-245-4455
www.berner.com

“Berner air curtains are a long-term solution to reducing supermarket operational costs.”

WHERE SAVVY RETAILERS use BERNER AIR CURTAINS:

2 Employee / Service Door

3 Receiving



1 Customer Entry

5 Shopping Cart

CUSTOMER ENTRANCES:

1 Both ambient and heated Berner air curtains are used on these high-traffic main entrances, along with or instead of a vestibule, to protect the front of the store from outside temperatures and traffic fumes as shoppers come and go.

EMPLOYEE / SERVICE DOORS:

2 Store managers use Berner air curtains over man doors to protect the back of the store from outside temperatures, secondhand smoke, truck exhaust and flying insects.

RECEIVING DOORS:

3 Supermarkets use Berner air curtains for shipping and receiving as a simple and energy-efficient way to keep indoor temperatures stable, flying insects out and the interior fume-free when unloading stock.

WALK-IN COOLERS / COOLER ROOMS:

4 The benefits of using Berner air curtains to maintain refrigeration temperatures: energy savings through decreased compressor run times, as well as the diminished threat, and associated costs, of food spoilage.

SHOPPING CART DOORS:

5 Large grocery chains combine Berner air curtains with cart-sized openings to both dry shopping carts and diminish heating/cooling loss.



Market of Choice, Eugene, Oregon:

"..Originally aimed at indoor air comfort, the stores have since experienced additional air curtain benefits of increased energy savings and flying insect infiltration reduction..."

Pete's Fresh Market, Chicago, Illinois:

"...the air curtains target flying insect infiltration, but are equally important in conserving energy and keeping employees and customers comfortable — especially during the checkout process — during the winter months..."

ARCHITECTURAL High Performance 10



Model# AHC10
Protection up to 10'
Sleek design, high performance, with clear satin anodized aluminum exterior.

ARCHITECTURAL Low Profile 8



Model# ALC08
Protection up to 8'
Low profile, clear satin anodized aluminum cabinet with a built-in Intelliswitch digital controller.

ARCHITECTURAL Elite 8



Model# AEC08
Protection up to 8'
Contemporary style design with white powder coated exterior.

ARCHITECTURAL Recessed 12 & 16



Model# ARC12 & ARC16
Protection up to 12' & 16'
Mounts flush with the ceiling, white aluminum exterior with a built-in Intelliswitch digital controller.

COMMERCIAL High Performance 10



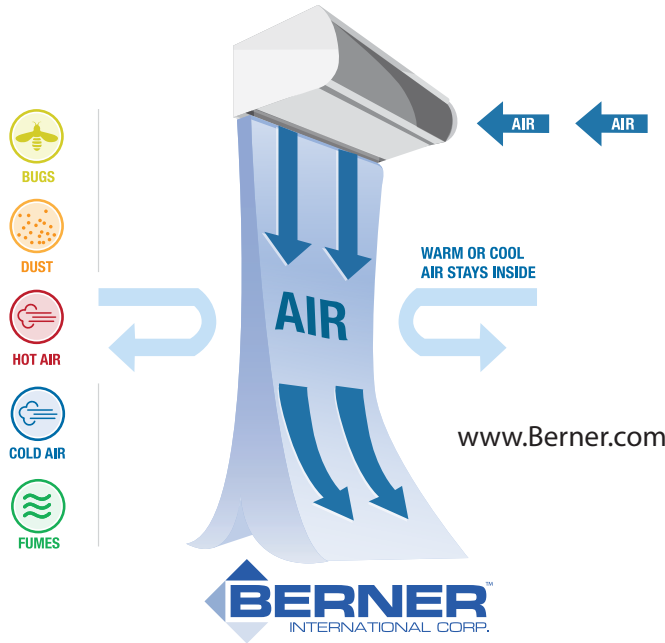
Model# CHC10
Protection up to 10'
Simple design, three speeds, high performance, white powder coated exterior.

COMMERCIAL Low Profile 8



Model# CLC08
Protection up to 8'
Two speeds, low profile, white powder coated cabinet.

HOW A BERNER AIR CURTAIN WORKS



BERNER AIR CURTAINS:
Engineered to perform, built to last.
Simple to install, operate, and maintain.
Custom Colors & Stainless Steel available.
Made in U.S.A.
Ships fully assembled.

www.Berner.com

SANITATION CERTIFIED High Performance 7



Model# SHC07
Protection up to 7'
Single speed, high-performance, white powder coated exterior.
• EPH Listed per NSF 37
• Suitable for Outdoor Mounting

SANITATION CERTIFIED Low Profile 7



Model# SLC07
Protection up to 7'
Single speed, low profile, white powder coated cabinet.
• EPH Listed per NSF 37
• Suitable for Outdoor Mounting

INDUSTRIAL Direct Drive 12 & 14

Model# IDC12
Protection up to 12'
• 1/2 hp single speed motor(s) - direct drive
(Optional: three speed)



Model# IDC14
Protection up to 14'
• 1 hp single speed motor(s) - direct drive
(Optional: two speed)

- Gray powder coated exterior with mill aluminum screen and access panels
- Durable, all welded construction

INDUSTRIAL Direct & Belt Drive 16

Model# IDC16
Protection up to 16'
• Single speed T.E.A.O. motor(s) - direct drive



Model# IBC16
Protection up to 16'
• Single speed T.E.F.C. motor - belt drive

- Gray powder coated aluminized steel exterior and removable lower section
- Durable, all welded construction

Berner is a UL Listed panel shop, authorized to build UL listed Motor Control Panels



For entrances with non-stop foot traffic ...

1 AIR ENTRANCE SYSTEMS

When the door never closes -

Grocery Stores and other retailers hide these re-circulating air curtains in their primary entrances to conserve energy and assist with climate control when the flow of foot traffic means that the door is always open.

Contact Berner for more information and design assistance



www.berner.com
111 Progress Avenue
New Castle, PA 16101
800-245-4455 724-658-3551



Saving Energy and Creating Healthy, Comfortable Environments

F-GRC March, 2016
©Copyright, 2016 Berner International Corporation