



To determine the appropriate air curtain for within your Hazardous Location, please fill in the following information.

PROTECTION TYPE:

- Climate Control
- Insect Control
- Both

OPENING LOCATION:

- EXTERIOR OPENING
 - Installed Indoors
 - Installed Outdoors
- Windstopping Protection:
 - 5-10 mph
 - 10-15 mph
 - Other _____ mph
- INTERIOR OPENING (Little or no outside winds)
Through draft (mph) or temperature difference between doorways _____ mph _____ °F

NEGATIVE PRESSURE:

- No
- Yes, approximate negative _____ FPM

POSITION OF AIR CURTAIN:

Horizontal Mount Only.
NO VERTICAL MOUNTING OF HAZARDOUS LOCATION AIR CURTAINS!

TYPE OF MOUNTING:

- Top Mount (Ceiling suspension rods)
- Wall Mount
- Other _____

VOLTAGE SELECTION:

- 120/1/60
- 208/1/60
- 240/1/60
- 208/3/60
- 240/3/60
- 480/3/60
- 600/3/60
- Other

HEAT:

- Ambient/Unheated
- Hot Water
- Steam

WHAT CLASS IS REQUIRED:

- Class I
 - Class II
- Class III Air Curtains are not Available

WHAT DIVISION IS REQUIRED:

- Division 1
- Division 2

SUBMITTED BY
COMPANY
DATE

PROJECT NAME	
PROJECT CONTACT	
ADDRESS	
STATE	ZIP
PHONE	
FAX	
E-MAIL	

WHAT GROUP IS REQUIRED:

- Group A
 - Group B
 - Group C
 - Group D
 - Group F
 - Group G
- Group E Air Curtains are not Available

WHAT TEMPERATURE CODE IS REQUIRED:

- T1
- T2
- T2A
- T2B
- T2C
- T2D
- T3
- T3A
- T3B
- T3C
- T4
- T4A
- T5
- T6

WILL THE CONTROL PANEL BE LOCATED WITHIN THE HAZARDOUS LOCATION?

- YES
- NO

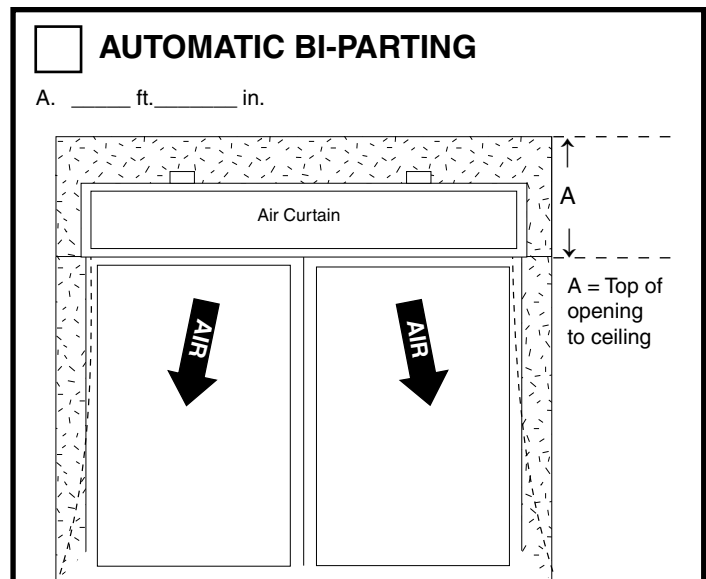
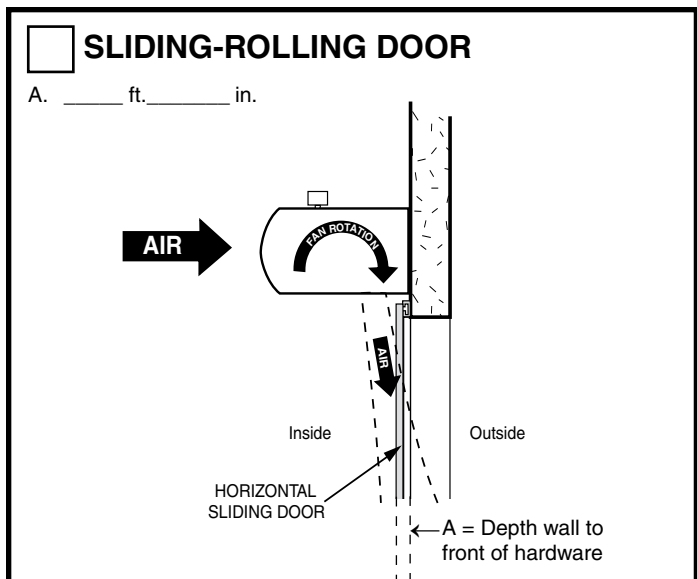
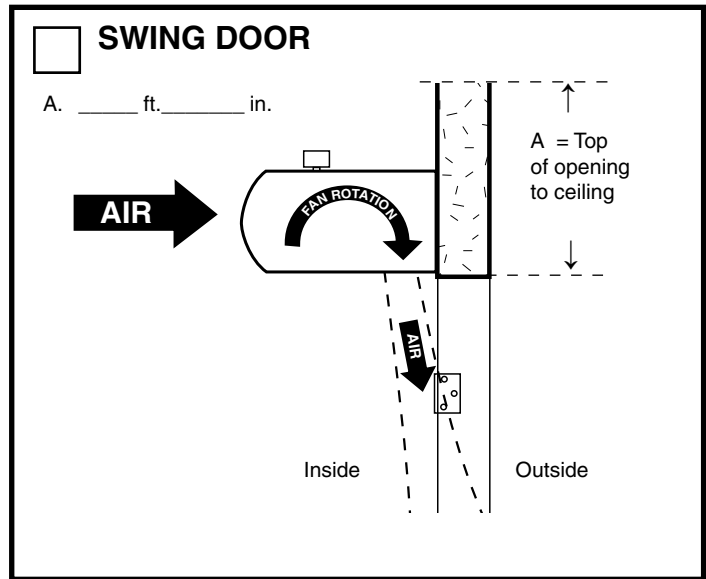
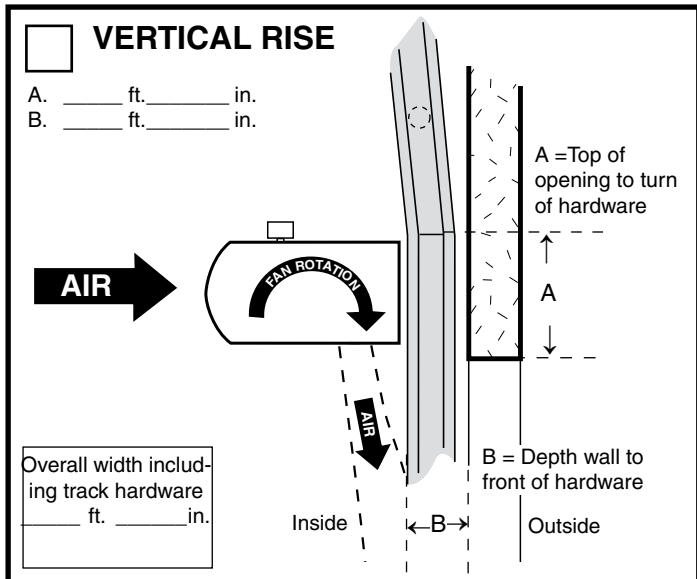
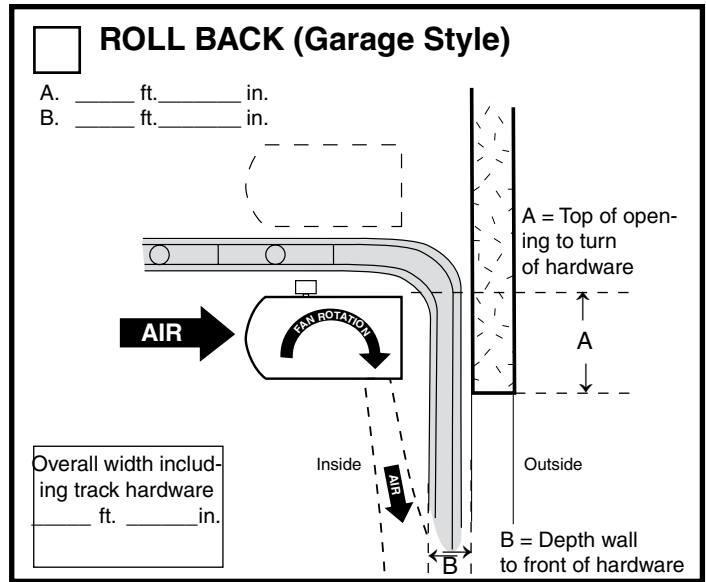
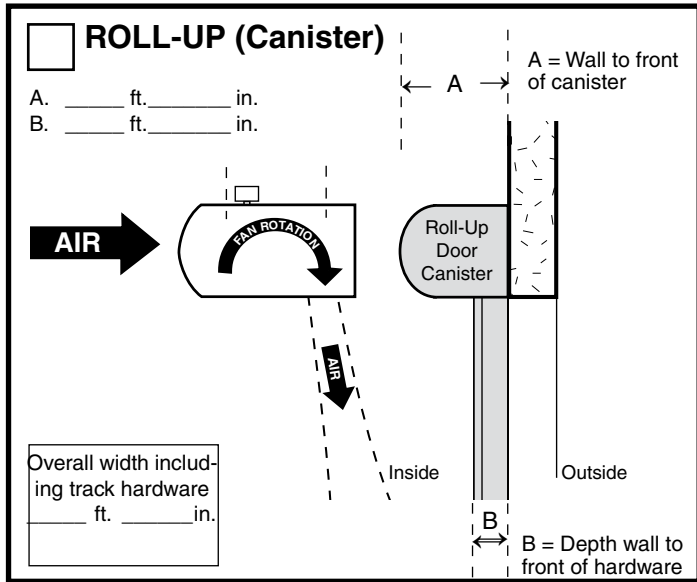
If mounted within the hazardous location, a NEMA 7/9 control panel is required and all accessories must be remote mounted (outside of the control panel).

If mounted outside of the hazardous location, a standard panel can be used and may have any standard accessories built into the panel.

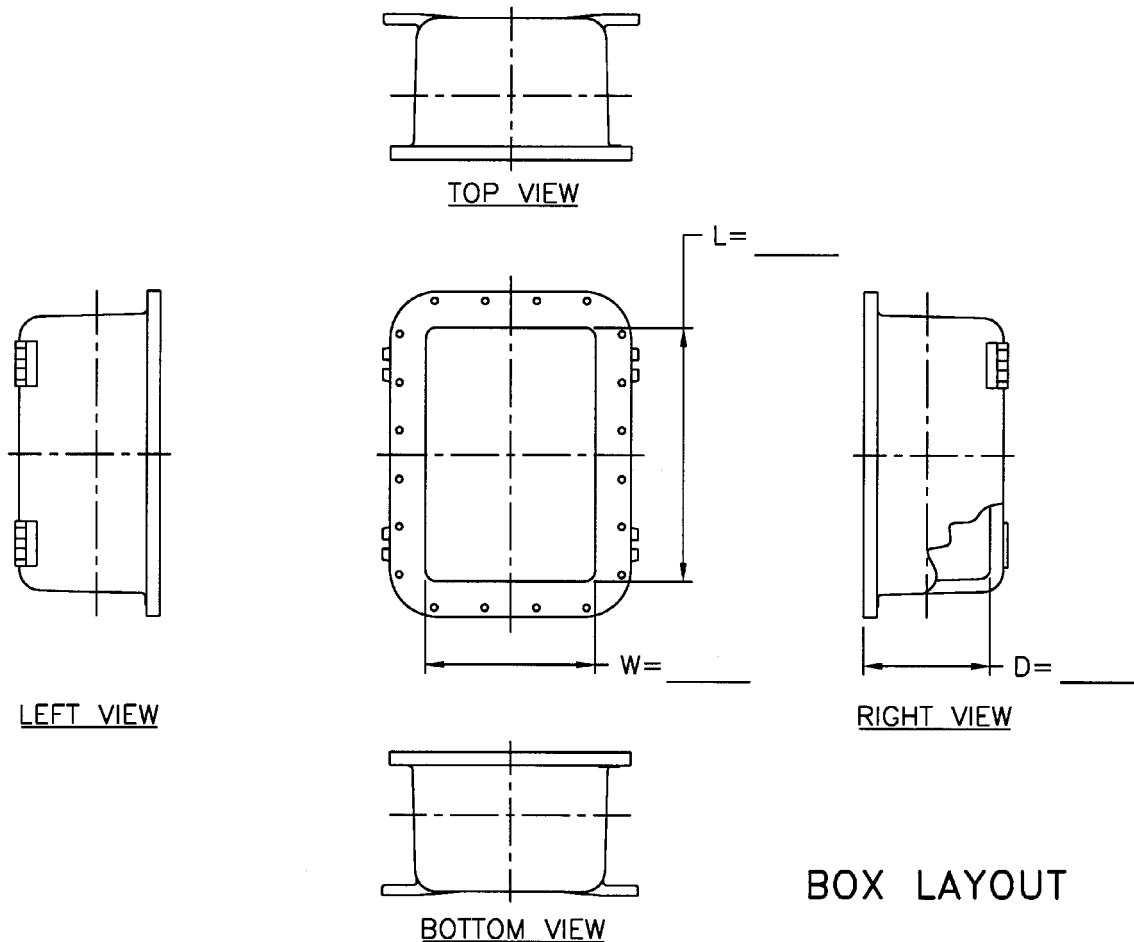
****IMPORTANT**:** If you chose **YES**, please specify:
- Hole location for electrical connections
- Field drill & tap by others or by Berner
See pages 3-5

Check appropriate door type. Please fill in as much dimensional information as possible.

DOOR WIDTH _____ ft. _____ in. DOOR HEIGHT _____ ft. _____ in.



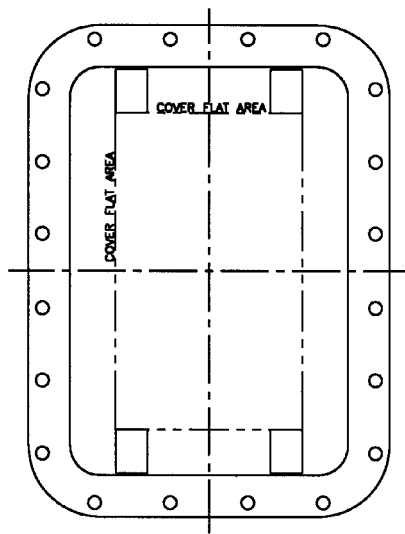
CUSTOMER DESIGN SHEET



CAT. #: XCE

- N4 O-RING
- MOUNTING PAN
- HINGES
 - LONG SIDE:
 - LEFT
 - RIGHT

Select Left or Right Hand Hinge.
 Left Hand standard if not selected.



COVER LAYOUT

*CONSULT FACTORY FOR FLAT AREA DIMENSIONS

Conduit Drilling and Tapping Guidelines

When drilling & tapping enclosures for conduit, proper installation requires compliance with the following:

1. Must be tapped with at least 5 full NPT threads (XCEX requires six NPT threads) in enclosure back or sides only; min. 1/2" conduit size.
2. Tapping depth of NPT holes must be plus 1/2 turn min. to plus 1-1/2 turns max. past standard NPT plug gage notch.
3. Inner end of conduit openings shall be smooth and well-rounded.

TABLE I

Thread Size Of Conduit, Inches (NPT)	Minimum wall thickness at conduit entrance excluding XCEX	
	Explosionproof	Dust Ignition Proof / Weather Proof
1/2 - 3/4	3/8 inch	1/4 inch
1 - 2	7/16 inch	5/16 inch
2 1/2 - 5	5/8 inch	7/16 inch

TABLE II

Conduit size, inches (NPT)	1/2	3/4	1	1 1/4	1 1/2	2	2 1/2	3	3 1/2	4	5
Minimum Distance from conduit CL to inside corner or back of box	1 5/16	1 7/16	1 9/16	1 3/4	1 7/8	2 1/8	2 3/8	2 11/16	2 15/16	3 1/4	3 7/8
Approximate diameter of union	1 7/8	1 7/8	2 1/16	2 7/8	3 1/4	3 7/8	4 7/8	5 1/2	6	6 1/2	7 1/2

TABLE III

Minimum spacing between conduit centers thru sidewalls only (inches)
(Double all distances in table for holes located in backwall)

Size	5	4	3 1/2	3	2 1/2	2	1 1/2	1 1/4	1	3/4	1/2
1/2	4 1/2	3 5/8	3 3/8	3	2 5/8	2 3/8	2	1 7/8	1 3/4	1 5/8	1 1/2
3/4	4 3/4	3 3/4	3 1/2	3 1/8	2 3/4	2 1/2	2 1/8	2	1 7/8	1 3/4	
1	4 7/8	4	3 5/8	3 1/4	3	2 5/8	2 3/8	2 1/4	2		
1 1/4	5 1/8	4 1/8	3 7/8	3 1/2	3 1/8	2 7/8	2 1/2	2 3/8			
1 1/2	5 1/2	4 1/4	4	3 5/8	3 1/4	3	2 5/8				
2	5 3/4	4 5/8	4 1/4	3 7/8	3 5/8	3 1/4					
2 1/2	6	4 7/8	4 5/8	4 1/4	3 7/8						
3	6 1/4	5 3/8	5	4 5/8							
3 1/2	6 1/2	5 5/8	5 1/4								
4	6 3/4	5 7/8									
5	7 1/4										

This information is compiled from data which we believe is reliable and is given in good faith. Since the methods of application and conditions under which our products are used are beyond our control, we are not able to guarantee the application and/or use of same. The user assumes all risks and liability in connection with the application and use of our products.

Note: All dimensions are in inches.

Metric threads available from factory for Group C & D applications only – Consult Factory.

Cover & Sidewall Area

Enclosure Series	COVER FLAT		CONDUIT - SIDEWALL				BACKWALL	
	A	B	C	D	F	G	J	K
060804	3 ⁷ / ₈	5 ⁷ / ₈	4 ¹¹ / ₁₆	6 ¹¹ / ₁₆	2 ⁷ / ₈	1	5 ¹ / ₈	7 ¹ / ₈
060806	3 ⁷ / ₈	5 ⁷ / ₈	4 ⁹ / ₁₆	6 ⁹ / ₁₆	4 ⁷ / ₈	1	4 ¹⁵ / ₁₆	6 ¹⁵ / ₁₆
081006	5 ⁷ / ₈	7 ⁷ / ₈	6 ⁹ / ₁₆	8 ⁹ / ₁₆	4 ¹ / ₂	1 ³ / ₈	6 ⁹ / ₁₆	8 ⁹ / ₁₆
101206	7 ³ / ₄	9 ³ / ₄	8 ¹ / ₄	10 ¹ / ₄	4 ⁵ / ₈	1 ⁹ / ₁₆	8 ¹ / ₄	10 ¹ / ₄
101406	7 ⁷ / ₈	11 ⁷ / ₈	8 ⁹ / ₁₆	12 ⁵ / ₁₆	4 ³ / ₈	1 ⁹ / ₁₆	8 ⁹ / ₁₆	12 ⁵ / ₁₆

